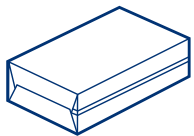


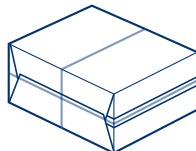
# sollas SX<sub>SERIES</sub>

## FLEXIBLE, EFFICIENT, AND QUICK OVERWRAPPING

The Sollas SX guarantees excellent wrapping quality for optimal product presentation with an overwrapping speed of up to 80 per minute. The machine is fully servo-driven so that all movements are perfectly controlled and optimized to ensure perfect product handling. Additionally, the SX can overwrap a wide range of products as both single product and bundles with a minimal change-over time.



Overwrapping



and bundling



DIGITAL VERSION



# Your benefits

- ▶ High-quality and reliable overwrapping machine
- ▶ Trailing edge seal: no seal on display side
- ▶ Easy operation through HMI
- ▶ Attractive and tight packaging, ensuring protection of products and exquisite product presentation to give first-user guarantee to costumers
- ▶ High production speed: up to 60 or 80 per minute
- ▶ Vacuum film feed for accurate film positioning and increased wrapping speed
- ▶ Automatic lubrication to ease maintenance
- ▶ Suitable to use with environmental-friendly packaging materials, such as BOPLA, paper, and/or BOPP
- ▶ Easy and accessible machine at one level
- ▶ Quick and easy product change-over
- ▶ Film reel can be replaced from a single side
- ▶ Flexible product size range to allow the processing of several different products
- ▶ Optional accessories, such as a tear-tape for easy opening
- ▶ Different infeed directions and bundle infeed systems possible
- ▶ Can overwrap both rectangular and squared packages

## Options

- ▶ Teartape for easy opening
- ▶ Printmark registration
- ▶ Allen Bradly controls
- ▶ Felt-lining on contact surfaces (recommended for parfum and cosmetics)
- ▶ Spot/stripe seal (parfum and cosmetics)
- ▶ Universal folding segment, so no change parts are required
- ▶ Stacking- and rotating infeed accessory (90 degrees stacking and/or rotating)
- ▶ Quick-change system, to perform product change-over without tools

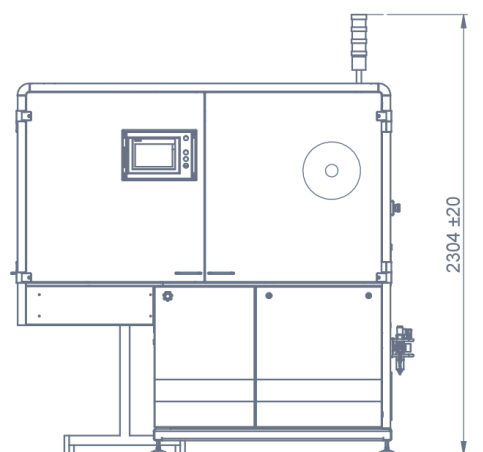
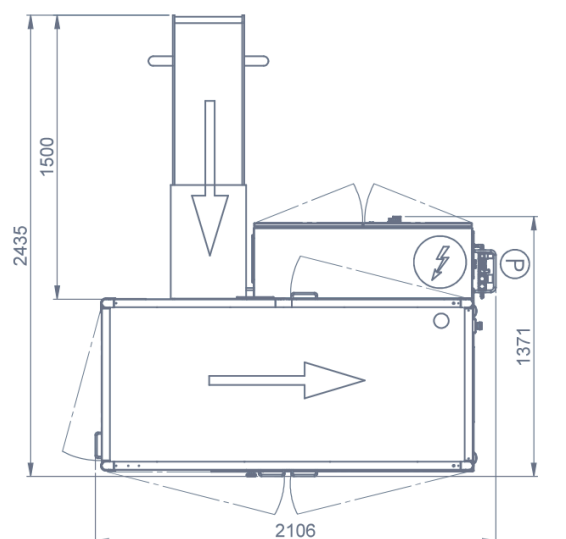
# Technical details

## Main specs

Max output <sup>1</sup>	<b>60/80 /min</b>
Min product size (mm) <sup>2</sup>	<b>L 40 W 40 (20) H 16 (7)</b>
Max product size (mm) <sup>2</sup>	<b>L 300 (336) W 225 (240) H 96 (125)</b>
Film width range	<b>50 - 435 mm</b>
Film-roll diameter max	<b>400 mm</b>
Air consumption	<b>5 nl / stroke<sup>3</sup></b>
Working pressure	<b>6 bar</b>
Power consumption	<b>4,0 kW<sup>3</sup></b>
Machine approx. weight	<b>1000 kg</b>
Machine color	<b>RAL 9006</b> (Sollas grey)
Drive system	<b>Servo and cam driven</b>
Control system	<b>PLC</b> (Standard SIEMENS, Rockwell or Allen Bradley optional)
Configuration	<b>HL / HR / LL / LIL / DIL</b>
Packaging materials <sup>4</sup>	<b>Polypropyleen, coated paper, recyclable BOPP en biodegradable BOPLA</b>

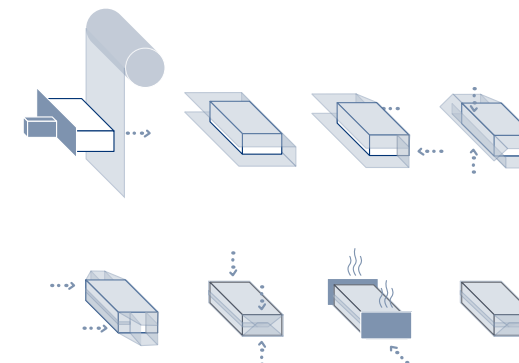
<sup>1</sup>Depending on product and packaging material. <sup>2</sup>Numbers within brackets indication optional changes. <sup>3</sup>Without accessories. <sup>4</sup>In general, all common heat-sealable packaging materials can be used. When in doubt, Sollas will gladly test any material that you wish to use.

## Dimensions

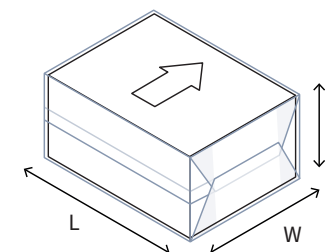


HL configuration

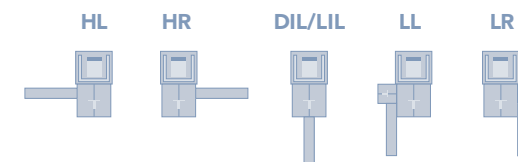
## Sollas signature folding



## Product dimension specification

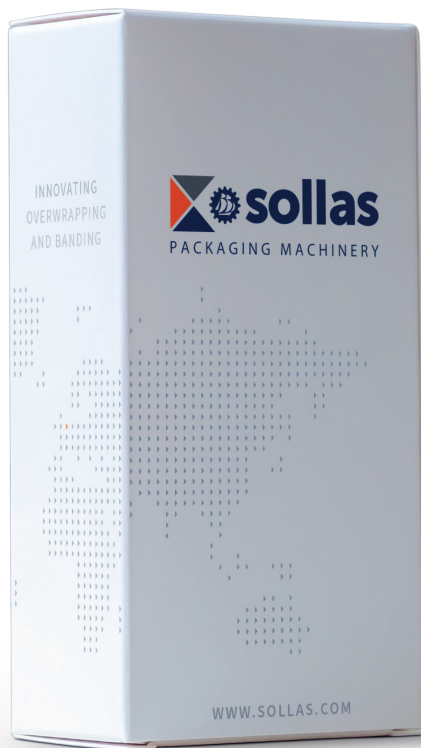


## Conveyor configurations





Sollas provides high quality packaging solutions. Our (over) wrapping and banding machines are customized and tailored to each individual situation. Quality and innovation are our keywords. Combined with a reliable service and, above all, a supportive, proactive approach, you can be sure to receive the whole package.



Sollas is a family-owned Dutch company. From our head office in Wormer, we coordinate all our national and international activities. Branch offices are to be found in France, Germany and United Kingdom. Backed by an international network of some 50 agents and distributors worldwide, we provide sound after- sales care and support.

## Interested? Contact us

### Headquarters

Sollas Holland BV, Bruynvisweg 1  
1531AX Wormer, The Netherlands  
[contact@sollas.com](mailto:contact@sollas.com)

[www.sollas.com](http://www.sollas.com)